



Refreshingly off the radar, the vibe at Capella Lodge is sophisticated yet relaxed. Spend idle hours by the pool, dine on the bounty of premium regional produce and revel in the simple pleasure of reconnecting with nature. Prepare for your stay with this quick-reference guide. We look forward to welcoming you soon.

*Mark & Libby* Capella Lodge Managers

## Feel At Home

A stay at the lodge is generously inclusive of gourmet breakfast and three-course dinner with inspired daily changing menus, sunset drinks and canapés, an open bar with premium wines and spirits from 6pm (a cellarmasters list is available at an additional cost), non-alcoholic beverages, selected in-suite bar and return Lord Howe Island Airport transfers.

## Island Activities

Lord Howe Island is a sub-tropical 'treasure island' preserved in time. An intoxicating blend of pristine beaches, rich pastures, lush rainforests and sheer volcanic peaks rising from the reef, Lord Howe is a sanctuary for rare plants, sea birds and marine life.

With Capella Lodge as one's own basecamp, guests take to walking tracks to explore subtropical forests, remote coves alive with magnificent birdlife and valleys brimming with ancient plants. The simplest routes are easy for walkers of any fitness, while the most challenging is the guided climb to Mount Gower's summit, renowned as one of the best adventure hikes in Australia.

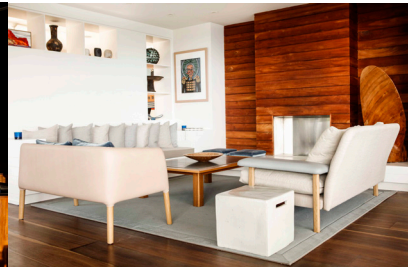
Marine excursions are a specialty on Lord Howe Island where a choice of guides and tour operators offer expeditions for snorkelling, diving, and kayaking. Glass-bottom boat excursions provide a view of the island's prolific corals and tropical fish. A journey to Balls Pyramid, the world's largest seastack and a renowned diving location, offers an unparalleled adventure, home to extraordinary bird and marine life.

Fish feeding at Neds Beach is a favourite among visitors, offering a chance to wade in the shallows with a frenzy of mullet, wrasse, garfish, silver-drummer, spangled-emperor and king fish. Down below, the clear, warm waters of the world's southern-most coral reef are ablaze with kaleidoscopic colour and a riot of fish, perfect to discover by snorkel or a scuba-dive for deeper inspection. Capella offers complimentary snorkel equipment for guests.

Other sports and activities available on Lord Howe Island include deep sea fishing, paddle boarding, tennis, golf and lawn bowls. Many excursions are weather dependent and are scheduled on limited days, others are subject to seasonal operation including the Mount Gower hike. As such pre-booking this expedition is recommended along with fishing trips. Any of the island's tour operators including private guides, naturalists and boat charters can be booked with the help of Capella Lodge staff. For more information on island activities, please visit the Lord Howe Island Tourism [website](#).

## Capella Spa

Relaxing into its lofty setting among the swaying kentia palms, the Capella Spa encourages dreamy surrender to island-inspired treatments. Featuring the Australian-made Li'Tya spa care range, a menu of rejuvenating treatments also embraces Lord Howe's natural environment. Reservations are recommended in advance. Peruse the menu and book online via the lodge [website](#), additional charges apply.



## Lunch

Designed to fit perfectly with a day spent lounging by the wet-edge pool or out exploring the island, lunch comes in many forms at Capella. Dine in Capella's restaurant or arrange a gourmet picnic or barbecue pack to enjoy at one of the many unspoilt beaches and secluded coves around the island, additional charges apply. Alternatively, Lord Howe Island offers a range of eatery options.

## Getting There

Lord Howe is situated in the Tasman Sea, 600 kilometres north-east of Sydney in New South Wales. Just 11 kilometres long and 2.8 kilometres at its widest point, Lord Howe has 300 permanent residents, with visitors limited to 400 at any one time. [Qantaslink](#) operate regular daily two-hour flights from Sydney as well as weekend flights from Brisbane. A checked baggage allowance of 23kg per person applies: the first bag up to 14kg and a second bag up to 9kg. However, if two bags are checked in, Qantaslink don't guarantee that both bags will travel on your flight. We highly recommend taking one bag per person (up to 14kg). Luggage allowances cannot be combined (ie two people cannot take a single bag weighing 28kg). In addition, a premium carry-on baggage allowance of 7kg per person applies.

## Travel Arrangements

It's essential to advise arrival and departure plans prior to arrival. Please advise details by email so as return transfers may be arranged accordingly.

## Airport Transfers

The lodge operates complimentary transfers connecting with scheduled flights to and from

Lord Howe Island Airport shared with fellow guests. Should your stay on Lord Howe include an additional property, the team at Capella will coordinate your transfer to or from the lodge as required.

## Getting Around

Capella offers complimentary adult mountain bikes for guests to explore the island at leisure. A limited number of hire cars are available with local operators and bookings are best arranged prior to arrival. Alternatively, the lodge team can assist with organising a vehicle during your stay, subject to availability.

## Explore Lord Howe

For more general information about Lord Howe Island please visit [Lord Howe Tourism](#).

## Services

There is no mobile/cell reception on Lord Howe Island. The lodge offers complimentary wireless internet, however, due to the remote location of the lodge the connection can be slow and intermittent.

## Climate

The subtropical marine climate produces warm summers and mild winters. Daytime temperatures range from 25-28°C in summer and 18-22°C in winter. Generally, conditions are appropriate for swimming between September and May. Walking, hiking and many other activities are enjoyed year-round. The climate is often likened to perpetual spring.

## Paradise Awaits!

Please don't hesitate to contact Baillie Lodges' reservations team with any queries or for more information prior to your stay. Safe travels to Lord Howe Island!

## Check In/Out Times

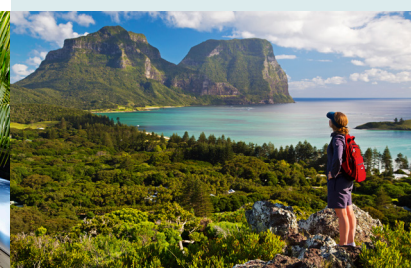
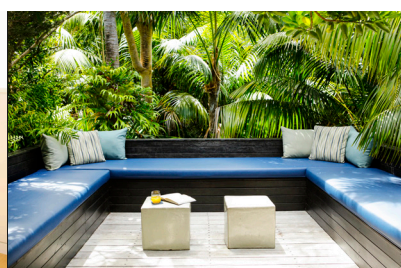
Check-in time is 2pm and check-out time is 10.30am. Where possible, flexibility with early check-in and late check-out will be provided, however, these are unable to be guaranteed. The facilities of the main lodge are available for enjoyment whilst at the property.

## Dress Code

Reflecting the easy-going nature of the island, dress is smart casual at Capella Lodge. Comfortable walking shoes, a warm top and rain jacket are recommended year-round. A hat and sunscreen are every-day essentials.

## Dietary Requirements

As the lodge is situated in a remote destination, it's essential to advise any special dietary needs at the time of reservation. We will do our best to tailor menus accordingly whilst providing opportunity to enjoy a range of premium local and regional produce. Should notice not be provided in advance, our chefs will endeavour to prepare suitable meals with the ingredients available. We regret we are unable to prepare meals requiring strict religious observance in the preparation.



## Contacts

61 2 9918 4355  
[reserve@baillielodges.com.au](mailto:reserve@baillielodges.com.au)  
[capellalodge.com.au](http://capellalodge.com.au)